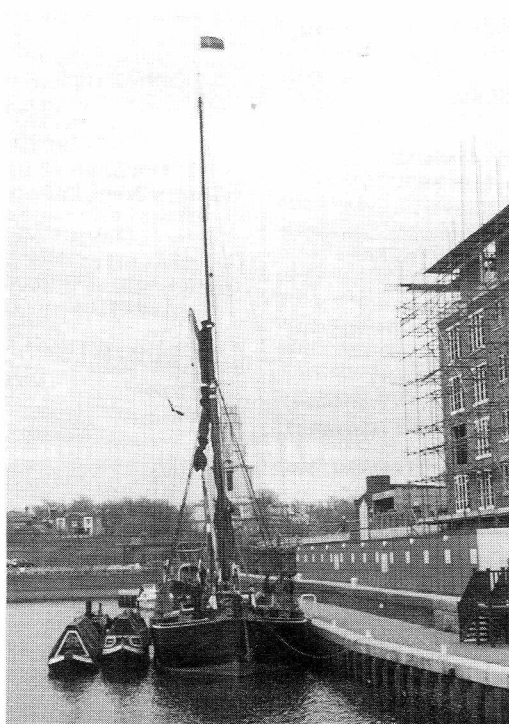


# Excalibur

**THE LONDON NEWSLETTER OF  
THE INLAND WATERWAYS ASSOCIATION**

**NUMBER 22, SUMMER 1996**

Editor: Mike Stevens, 333 Lyham Road, London SW2 5NS  
Phone 0181 674 9387 Fax 0181 674 3724 Mobile 0850 665 102



Narrowboats *President* and *Kildare* meet sailing barge *Pudge* at Limehouse Basin  
as part of the IWA Jubilee Jigsaw programme. See story, page 5.

Photo: Mike Stevens

## WHO'S WHO IN LONDON IWA

\* = answerphone

### LONDON REGION

#### PRESIDENT

Illyd Harrington, JP, DL

#### VICE-PRESIDENTS

Dr Michael Essex-Lopresti — 0181 882 1337

*Towpath walks organiser*

Arthur Farrand Radley, MBE — 0171 603 6062

#### CHAIRMAN

Libby Bradshaw — 0181 874 2787\* (also fax)

Ground floor flat, 61 West Side

Wandsworth Common, London SW18 2ED

(also *Chairman of Canalway Cavalcade Committee*)

#### DEPUTY CHAIRMAN

Ian Ferguson — Mobile 0956 669573

Fax 0181 533 5128

#### SECRETARY

Alison Struckett — 0181 691 7215

54 Hyde Vale, Greenwich, London SE10 8HP

#### SECRETARY-ELECT AND EXCALIBUR EDITOR

Mike Stevens — 0181 674 9387\*

#### TREASURER

Vernon Draper — 0181 668 5522

#### COMMITTEE MEMBERS

Richard Bird — 0181 857 6367

Ron Bingham — 0181 855 3693

(*Chairman of Planning and Navigation Committee*)

Tim Lewis — 0181 367 6227\*

(*Social Secretary*)

Alan Russell — 0181 529 0689\*

(*N & E London Branch Chairman*)

Mike Stimpson — 01923 770 425

(*Lectures Panel organiser*)

(*Vacancy for Middlesex Branch Chairman*)

(*Vacancy for S. London Branch Chairman*)

#### OFFICIALS NOT ON THE BRANCH COMMITTEE

Lewis Phillips — 0181 673 4412\*

(*London Ring Plaques distribution*)

### EXCALIBUR

#### EDITOR

Mike Stevens

333 Lyham Road, London SW2 5NS

Tel 0181 674 9387\* Fax 0181 674 3724

Mobile 0850 665102

#### ADVERTISING MANAGER

Robin Bishop

11 Lichfield Road, Cricklewood

London NW2 2RE

Telephone 0181 452 2632 (evenings)

01276 63366, ext. 236 (work)

### MIDDLESEX BRANCH

#### CHAIRMAN

*vacant*

#### SECRETARY

Rosie Limming — 01895 252 011

13 Tachbrook Road, Uxbridge, Middx UB8 2QS

#### TREASURER

Siobhan Selden — 0181 574 5624

20 Bulls Bridge Rd, Southall, Middx UB2 5LU

#### COMMITTEE MEMBERS

Robin Bishop — 0181 452 2632 (*Social Sec*)

Vernon Draper — 0181 668 5522

Terry Marston — 0181 902 1150 (*Membership*)

Bob McGowan — 0181 848 8384

### NORTH AND EAST LONDON BRANCH

#### CHAIRMAN

Alan Russell — 0181 529 0689\*

97 Waverley Avenue, Chingford E4 8HS

#### SECRETARY

Cathy Russell — 0181 529 0689\*

97 Waverley Avenue, Chingford, E4 8HS

#### TREASURER

Tim Lewis — 0181 367 6227\*

6 Downs Road, Enfield, Middlesex EN1 1PA

#### COMMITTEE MEMBERS

Debbie Bevan — 0181 367 6227\* (*Publicity*)

Lesley Cardy — 0181 804 9071 (*Membership*)

Peter Cardy — 0181 804 9071

### SOUTH LONDON BRANCH

#### CHAIRMAN

*See Late News page*

#### DEPUTY CHAIRMAN

David Llewellyn — 0181 674 9387\*

#### SECRETARY AND PUBLICITY OFFICER

Mike Stevens — 0181 674 9387\*

333 Lyham Road, London SW2 5NS

#### TREASURER

Mary Llewellyn — 0181 653 4862\*

5 Cornwall Gardens, Tennyson Rd, SE25 5RZ

#### COMMITTEE MEMBERS

Richard Bird — 0181 857 6367

Libby Bradshaw — 0181 874 2787\*

Adrian Steinkamp — mobile 0802 863744

(*Waterways for Youth contact*)

David Young — 0181 654 3054

(*Membership and Recruitment Officer*)

# From the Editor

**THERE'S A LOT GOING ON**, and I don't just mean the IWA Jubilee celebrations. Our Campaign Cruise past Parliament was very timely, since the interface between Government and the waterways is a busy one at the moment. This issue's *On the Metreau* pages record several relevant items. The SRB bid for a £30 million regeneration of London's waterway corridors, Mr Gummer's thoughts on planning for the Thames and the Latton by-pass row (and another about the Derby Canal, details of which were not to hand when I wrote this) all need our attention. Having attended some meetings of our Planning and Navigation Committee I have seen at first hand the continuing work needed to scrutinise planning applications.

Some sceptics wonder whether IWA still has a rôle to fulfil. Some people still see it as a boat-owner's club or as just as an arm of the restoration movement. The examples above give the lie to these points of view. The battle to preserve the waterways goes on. IWA has an important and leading part to play in it. To win, we need support and understanding from those in a position to vote money for things to be done.

I work in the world of education. Fifteen years ago we were all complaining that education got a bad deal out of Government because there were not any votes in it. That has changed; all political parties now put education near the top of their agendas. There are not many votes in waterways at the moment. We must change that by building up the level of public support, understanding and love of the waterways.

We will not do all of that overnight, but we have made a start and must continue. One place to start might be with the issues identified in the paper we gave to the MPs on our Campaign Cruise. The text of this, and a note about some subsequent events, appears on page 13 of this issue. If each *Excalibur* reader used this as the basis for some questions to candidates (of all parties) at the General Election, we might convince them that there are quite a few of us out here who care about the waterways.

## A BUMPER JUBILEE ISSUE

This is a bumper Jubilee issue with extra pages (count 'em) to fit in reports of all the Jubilee events to date. We have now done most of what we planned for the year, with just a few events left to come. On the whole things have gone well so far. The weather has usually been kind to us and the public events have drawn good crowds. Press coverage has, as ever, been patchy but has

hit some good highs. I wonder why we got good publicity for Canalway Cavalcade which, after all, does not change much from year to year, but very little coverage of the Campaign Cruise, which I would have thought was a genuine news item. I suppose it depends on what other news is around on the day.

## SORRY!

I am afraid this issue of *Excalibur* is late again, for which I offer my apologies. Summer is a time when my work usually slows down quite a bit, but not so this year. And the many extra IWA events taking place this summer took a lot of my time, so with one thing and another, this issue took a long time to come together.

## TIME FOR A CHANGE

On page 10 you will see a summary of the various changes on Branch and Region Committees since the AGMs. The process is not quite complete, as we have two new Branch Chairmen to find. But hopefully at least one of them will be appointed in time to be announced on our Late News Page.

I have written before that I feel the time has come for me to hand *Excalibur* over to a new Editor. The pressure of my work is one reason, but far from the only one. Five years in the job must be long enough, and I would hate to stick at it so long that I go stale. I have enjoyed my time at the Editorial word-processor. I still do enjoy it, and I would like to get out of the job while that is still true. The fact that I shall be taking over as Region Secretary early in 1997 gives me the opportunity to set a deadline: I will do one more issue and that is it. Hopefully if we can find a successor fairly soon, they can work alongside me on the Autumn issue ready to take over for the Winter one. All we need is to find the person. Could it be you?

Mike Stevens

## FUTURE ISSUES

Publication date	Copy date
No. 23 Autumn 1996	Now
No. 24 Winter 1996	9 Sept 1996
No. 25 Spring 1997	8 Feb 1997
No. 26 Summer 1997	10 May 1997

The IWA may not agree with opinions expressed in this magazine but encourages publication as a matter of interest. Nothing printed may be construed as policy or an official announcement unless so stated, otherwise the Association accepts no liability for any matter in the magazine. Although every care is taken with advertising, no responsibility whatsoever can be accepted for any matter advertised.

© IWA London Region 1996.

Published by the Region at 114 Regent's Park Road, London NW1 8UQ.  
Telephone: 0171-586 2510/2556.

The Editor reserves the right to edit any article or letter submitted for publication.

# This is IWA Jubilee Year

What's happened so far in London and what's still to come



*Boats rafted up across the Mill Pool at the head of Bow Creek  
for the opening ceremony of the Three Mills Rally in June*

*Photo: Mike Stevens*

IWA's Golden Jubilee Year has certainly arrived with a bang. The main bulk of our London activities were grouped together in late April and early May, so this time there's much more to report on than to preview.

## TREASURE IN THE SUN

Saturday 27 April was sunny, warm, even hot. The best day of the year and the best for a month or so to come. This was the day that Jubilee Year was launched in the London Region by Middlesex Branch with a Treasure Hunt along the Grand Union Canal. Organised by Alison Struckett all on her own, there were sixteen teams taking part, nine by boat and six on foot, (*and what about the other one? Ed.*)

Starting and finishing at Hillingdon Canal Club in Uxbridge, home of Middlesex Branch, the route was a closely-kept secret until the last minute when we were allowed to open our packs. Since most boats were facing south it seemed we had all guessed correctly that the Slough Arm was favourite—and so it was, though only as far as the first winding hole. The pedestrian teams kept pace with the boats but had the advantage of being closer to the answers to the clues, not many of them being set in mid-cut. As well as observation-type clues we also had to collect various objects along the way: items such as

empty crisp packets and old bottle-tops. A general towpath clean-up was therefore run in tandem with the event.

One of the more interesting tasks was to establish the cost of a pint of beer in the *Paddington Packet Boat*. The Landlord would only give the right answer to those who bought one, or so he said. Alison ended up giving a point for a variety of answers. This was not the only occasion it was necessary to moor up and go hunting for answers, and boaters on the Cowley North moorings were very puzzled by the succession of narrowboats stopping on the towpath for their crew to go delving into the undergrowth.

The boat event was won by *Cleopatra II* with *Fulbourne* second. The *Peregrine* team won the walkers' event, with the *Hunters* second. Alison had also set two quizzes back at the Clubhouse. One was a picture quiz of canal landmarks and was won by Jim Macdonald. The second was based around the London Underground system, with cryptic clues leading to the names of stations. This was won by Underground worker Andrew Simpson.

A splendid job was done by Rosie Limming who rushed here and there all day long picking up burgers, bangers, bread, salad, sweets and so on for the evening barbecue. Bill Bannon was chef and we



fed 70 people, including most of those who had taken part in the event. It had been a great success, helped in no small part by the weather, but still a credit to all those involved in the organising, particularly Alison and Rosie. What had been a low-budget event turned in a profit of about £130, which exceeded all our wildest dreams by a long way.

Vernon Draper

## JIGSAW PIECES ALL OVER THE PLACE

The next few days were very tied up with activities involving our various pieces of the IWA Jubilee Jigsaw. These were delivered to us on the evening of the Treasure Hunt from where they dispersed to the three Branches for conveyance to Canalway Cavalcade and on to Birmingham.

I took custody of South London's jigsaw piece, for a rendezvous with the Thames Barge Sailing Club's 1922 sailing barge *Pudge* on the next Thursday (2 May). Our Branch ex-Chairman, Eric Garland, joined me at Greenwich Pier to hand over our jigsaw piece to the barge. *Pudge* was chartered for the week by former London IWA members Wendy and Steve Yates (now living in Bedfordshire) who are active members of the barge club. Other Barge Club/IWA joint members on the trip included David and Elizabeth Wood and Peter Roberts. When *Pudge* reached Greenwich she was already carrying the jigsaw pieces from Chelmsford and Kent and East Sussex Branches.

The next morning, some of us tore ourselves away from Canalway Cavalcade preparations to go to Limehouse Basin where *Pudge* was scheduled to hand the three jigsaw pieces to nb *President*, the 1909 Josher steamer. (See photo on the front cover). *President*, with her butt *Kildare*, was returning from Nazeing on the River Lee where she had collected some souvenir glasses (of which I shall write again). This was another most enjoyable occasion and a rare one: I for one have never before seen a cargo transhipped from a sailing barge to a pair of narrowboats, and it will probably be a long time before it happens again. As I dragged myself away to go back to Little Venice to prepare the Cavalcade Press Office, the crews of the three vessels were having long technical chats over coffee in *Pudge's* saloon.

North and East London Branch sent their jigsaw piece off from *The Navigation*, a riverside pub in Tottenham, and called on the services of the local Mayor to do so. From there it was carried in the Russell family's boat *Auntie Barb* to Canalway Cavalcade where it, too, was handed over to *President* by Sarah Russell, out in the middle of the Pool as *President* passed by the bows of *Auntie Barb* on the Monday afternoon.

I never did find out exactly what happened to Middlesex Branch's jigsaw piece! They had

originally hoped to put it on board *President* at Uxbridge wharf before the steamer went to Nazeing, but the timing for that didn't work out. I assume that one of the many boats that came from Uxbridge to Canalway Cavalcade brought it with them.

In addition to the jigsaw pieces mentioned above, Chiltern Branch's piece was also at Canalway Cavalcade, having been brought there on Ray Joyner's boat *Lady J*. That made six pieces in all, which left some days later on *President* bound eventually for Birmingham where the jigsaw was to be erected at the World Canals Conference.

## SUNNY BUT COLD AT CANALWAY CAVALCADE

A bright but cold May Day Bank Holiday weekend brought one of the best crowds that Canalway Cavalcade has seen for a few years. About 130 boats filled the pool and stretched a long way down the Delamere Terrace moorings. It was good that this year BW had given the event control of a great length of the latter.

The opening ceremony was performed by Alan Jervis, IWA's newly-appointed national Deputy Chairman and a former Chairman of WRG. He was supported by the Lord Mayor of Westminster and the Deputy Lord Mayor (who was at the event in his own ex-GUCC boat, *Denebola*) and David Fletcher, BW's newly-appointed Chief Executive.

After the main ceremony, they assisted at two others. The first was the hand-over of *Jubilee*, a boat that has been loaned to IWA for a year as a touring exhibition base. It is sponsored by a group of companies in the marine leisure industry, led by boat-time-share specialists Ownerships. Keys to the boat were handed over by its builder, Pat Buckle, to David Allison-Beer of IWA's Management Committee. The official party then went on to the grass site for the official launch of *President's* Jubilee glasses. These are half-pint tumblers engraved with the BW and IWA logos and are being sold from *President* at various events during the year in aid of the Jubilee Appeal. The project was thought up by that indefatigable fund-raiser Jennifer Thomas and is supported by BW.

The big news of the weekend was London WRG's three-times-in-a-row victory in the competition for the best decoration of a boat by a group or society, for which the trophy is a large Buckby Can presented by its painter, Ray Dunford. This is accompanied by a cheque, which they immediately decided to donate to the Golden Jubilee Appeal. This Appeal (in case you haven't heard of it already) aims at buying WRG a new JCB excavator and replacing their elderly fleet of vans. The London WRG entry for the event centred on cardboard models of these on the large foredeck of Rupert Smedley's boat *Ben*.

The full list of prize-winners at the event is:

**The Marcus Boudier Memorial Award** for the best privately-decorated boat in the pageant:

- 1st: Linda Anfuso on *Tulip*
- 2nd: Graham Whittle on *Grumbles*
- 3rd: Keith Tolhurst on *Ellen Rose*

**The Buckby Can Trophy** for the best decoration of a boat in the pageant by a group or society:

- 1st: London WRG on *Ben*
- 2nd: The Church Army on *Hartley Harlequin*

**The Cruise Electric Trophy** for the best illuminated boat:

- 1st: Chris Barber on *Sun*
- 2nd: Pat Perry-Barton on *Quercus*
- 3rd: Beryl Windsor on *Anne Louise*

**The Westminster Trophy** for the boat-handling competition:

- 1st: Gary Shearing on *Pamela II*
- 2nd: Chris Barber on *Sun*
- 3rd: Graeme Heap on *Azolla*

**The Vic Trott Memorial Award** for the best "boaters' Sunday Best" costumes:

- Michael and Greta Wright (of IWA Herts Branch)

## A PLEASANT COUPLE OF EVENINGS

At the end of Canalway Cavalcade, a number of boats were going on together to take part in the Campaign Cruise past Parliament, and so we had arranged a couple of social evenings on the way.

The Tuesday was the regular date for North and East London Branch's Islington Social, which they moved for the occasion to St Pancras Cruising Club, whose Commodore, Roger Squires, gave a talk about Thames Tideway bridges or, as one boater put it "What not to hit on Thursday". Libby Bradshaw and I were fully occupied at Little Venice all day and did not have time to get our boats to St Pancras, which we very much regretted when we arrived there by car and saw the splendid gathering tied up outside. The clubhouse was bursting at the seams for Roger's excellent talk and SPCC's hospitality was as brilliant as ever.

Wednesday evening brought South London Branch's turn to host the flotilla for a gathering at the London Canal Museum. With the visitors added to the residents, Battlebridge Basin was choc-a-bloc with boats; an exciting sight. We had decided not to have a speaker, just a social evening. Some of the Branch Committee provided refreshments on the towpath and Dave Bryant sang some folk songs.



London WRG's winning entry in Canalway Cavalcade in May  
Photo: Mike Stevens

Many thanks to them and for the Museum for allowing us to hold the event there. This time Libby and I did manage to get our boats there. Thank you Mary Llewellyn and Daniel Roth for lock-wheeling for us. London WRG were due to have their monthly drink that evening and decided to move it from their regular venue to the *Waterside Inn* at Battlebridge Basin in order to be part of the event, which was very welcome.

### CAMPAIGNING ON THE TIDEWAY

Thursday 9 May was the day for South London Branch's Campaign Cruise past Parliament. A new venture born as an answer to the question "what can you do instead of a Branch Rally if your only waterway is tidal?"

Some 38 boats mustered in Limehouse Basin in the morning, many of them having come down the Regent's that day from either Battlebridge or St Pancras, assisted on the way by lock-wheelers from KESCRG. Roger Squires, as Cruise Commodore, gave a wonderfully clear and comprehensive skipper's briefing before marshalling us all through the lock. It is a great tribute to Roger's organisational skills that despite some delays on the Regent's that morning and consequent late arrivals at Limehouse the locking was so efficient that the flotilla was spot on time, in good order and with banners flying as we reached Westminster.

The official party on IWA's boat *Jubilee* and your Editor's *Felis Catus II* turned across the tide above Lambeth Bridge to moor to Lambeth Pier. The IWA delegation was led by the national Chairman, Audrey Smith, supported by Branch and Region Chairmen, Libby Bradshaw and Mike Stimpson respectively, and by Region President Illyd Harrington. On the pier they met the Officers of the Parliamentary Waterways Group; its Chairman, Sir Anthony Durant (Conservative), Vice-Chairman, Lord McNair (Liberal Democrat) and Secretary, Bill O'Brien (Labour). Audrey presented them with a statement of IWA's campaign aims, the text of which can be found on page 13 of this issue. While waiting for the procession, they had been hosted on the pier by Region Vice-President Arthur Farrand Radley and Adrian Steinkamp from South London Branch Committee.

The rear of the procession was brought up by a number of commercial vessels who trade regularly on the tideway and who had been organised by IWA's Inland Shipping Group to add their support. Boats in the flotilla were heading for various destinations afterwards. Roger had marshalled at the front of the procession all those boats who planned to return to Limehouse. They turned after Lambeth Bridge and for a few moments both sides of the river were occupied by streams of narrowboats, making a very brave sight.

Those not turning back to Limehouse proceeded to either Teddington or Brentford. The latter and larger group had arranged an evening gathering for an 'indoor barbecue' in one of the local hosteleries, which proved a most enjoyable occasion. Many of us had been together on our boats since before Canalway Cavalcade, a full week, and the sense of comradeship and good humour was palpable.

### DINNER TIME

Friday was the day to recover before some of us met again on Saturday evening for the Region Jubilee Dinner at the *Vitello D'Oro* in Westminster. This was exactly the 50th anniversary of IWA's first public meeting, held here in London. The dinner was a small gathering (are dinners out of fashion at the moment or do waterways people not like indoor events?) but very pleasant.

As after-dinner speaker, Region Vice-President Arthur Farrand Radley spoke about the history of London IWA. Region Chairman Mike Stimpson arrived straight from IWA Council which had just voted to award Farrand the Cyril Styring Trophy for his years of work spreading the gospel of the waterways, including by organising the London IWA Lecturers Panel. It was most fortunate that we were able to announce this at the dinner. The official presentation will be made at the Limehouse Festival in October.

### BACK TO THE THREE MILLS

Back in 1987 the then London Branch of IWA organised a Rally at the Three Mills at Bow. Our aims then were twofold; to press for the restoration of the Bow Back Rivers and of the House Mill, Europe's largest tide mill. On June 1 and 2 this year our North and East London Branch and St Pancras Cruising Club took boats back to the same site for the Branch's first Rally. Since 1987 there has been a lot of progress in that area, much of which has been chronicled from time to time in *Excalibur*. The Back Rivers have largely been cleared of rubbish and have been dredged. Sadly because they are semi-tidal the dredging needs to be repeated rather more often than anyone would like. One section of the House Mill has been restored and the rest of it is now shrouded in scaffolding as the main timber frame of the rest is worked on. A visitor and education centre has been built next to the Mill on the site of the former Miller's House.

So there was a lot to be seen by the boaters who came this year. We were welcomed by sunny weather, if rather too windy at times for the comfort of some of the stall-holders. The event was supported by BW, the Lee Valley Park, Stratford City Challenge, the Lower Lee Project, London Industrial Estates, the Tidal Mill Trust and local businesses. The latter included Tesco's store

adjacent to the site from whose car park the event was very visible, thus attracting a good number of visitors.

There were a number of boating events. For the opening ceremony, most of the boats present went into the Mill Pool at the top of the tide and rafted up right across it (see photo). Later on Saturday boats went round the semi-tidal 'navigable loop' of the Bow Back Rivers, or as much of it was accessible; there were bridge-works going on at Marshgate Lane. On Sunday the voyage was up the fully-tidal Waterworks River. Peter Ward and Peter Cocup on *Kitty* won the prize for the best-decorated boat, a splendid Buckby Can painted by Tim Whitelock.

## MIDDLESEX AGAIN

20 June brought Middlesex Branch's Gathering of Boats at Willowtree Park on the Paddington Branch. This was a different sort of event; for boaters rather than the general public. Once again we had sunny weather, this time extremely hot. About 30 boats attended, mostly locally-based, and a good time was had by all. The beer tent was provided by Hillingdon Canal Club. Saturday afternoon saw some informal sports. Even your Editor took part, trying to remember how to play boules. The evening brought a barbecue and Barn Dance. On a hot evening, with an open marquee, boaters had brought out their folding chairs or were sitting on the grass, many of them with nightlights or candles.

Sunday's programme advertised Boat Jumble in the morning and a decorated boat competition in the afternoon. The former was a very small affair, and I saw no sign of anyone preparing for the latter by the time I left at around mid-day. Next time tell us and we will come prepared! But it did not matter. The event was not about competition, just about a group of boaters getting together and socialising.

## DRESS UP AND MAN A LOCK

On Sunday 4 August (when some of us will be on the BCN Marathon Cruise) Middlesex Branch will run an event of a kind unusual in London. They will be taking a group of people, some in traditional costume, to man Denham Deep Lock for passing boaters. This is being done to publicise the IWA and to raise money. It is in the future as I write, but will have happened when you read this. We wish them well for the venture.

## LIMEHOUSE FESTIVAL

The final boating event of Jubilee Year in London is this year's Limehouse Festival, on the weekend of 5 and 6 October. This is being organised jointly by IWA London Region, BW,

the Limehouse Co-operative and local community and the Cruising Association. Our partners have agreed to it being labelled as an IWA Golden Jubilee Event. The London Docklands Development Corporation who were co-organisers for the last couple of years are no longer actively involved in the arrangements but are still sponsoring the event financially. Plans are coming along nicely. There will be the usual boating events and trade show, and this year a firework display and illuminated event on the water. Details can be obtained from Libby Bradshaw (phone number on page 2) and boat entry forms from Brian Murch 0181 802 9695.

## IWALK

Yes, IWalk is happening on Saturday 5 October. Yes, it will link in with the Limehouse Festival. Yes, it will provide an opportunity for folk to raise money for the waterways. But, no, I can not give you any more details yet. This is because we have had to change our plans. We had started planning a circular sponsored walk starting and finishing at Limehouse, but this was scuppered when we learnt of a towpath closure. Alternative plans are now under consideration, and I hope to be able to put them on the Late News page.

## A NON-EVENT

This is rumoured. What will it be? Will you be there? Or perhaps not. No, it is not another name for IWalk. See the Late News page.

## A FIERY FINISH

The very last event of all (unless somebody knows something I don't) in London's share of the Jubilee Year will be a Firework Party organised by Middlesex Branch and Hillingdon Canal Club at the latter's premises at Uxbridge Wharf on Saturday 2 November. Details from Rosie Limming (phone number on page 2).

## SO THAT'S IT

Then it will all be over. What difference will it make? We shall have enjoyed a lot of events. WRG will benefit from the new plant that the Jubilee Appeal will buy. A lot of other waterways groups will have made some money. Hopefully a lot of people will have heard of the IWA and the waterways who might not without the Jubilee. Perhaps those of us who have been involved in it all will, when we have slept for about six months, find renewed vigour for challenges yet to come. Perhaps a few of our less involved members will be inspired to join in. In one way or another we might have pushed the cause of waterway restoration, preservation, conservation and development a bit further forward. Let us hope so. That is what it is all for, after all.

*Mike Stevens*

# From the Region Chairman

## Libby Bradshaw

It was not without a lot of heart searching that I decided to stand as your Region Chairman this year, partly due to a number of other existing commitments both inside and outside the IWA and the effect this might have upon them.

I hope very much that I have made the right decision and that I will have not only your support but also your ideas on how we can carry the Region forward into the next 50 years of the Association. Please do write to me with your suggestions.

My first task as your Region Chairman is to thank my predecessor, Mike Stimpson, for all the hard work he has carried out in his three years as Chairman of the "new" London Region.

Changing from one branch into a region with three branches has not been without its difficulties. Distinguishing the relative rôles of the region and branches has taken time to develop and building up three branch committees in place of one is inevitably a slow process.

One of the big 'plusses' of having three branches has been the opportunity to develop social meetings in five locations around London as well as the central venue. Whilst in the early days of the new venues response was encouraging, all three branches are now experiencing a variable attendance. If you have ideas on what you would like for your social meetings please contact your local branch secretary.

One area of work that I am keen to build on is that with community boat projects and youth groups. At present this is very much at the ideas stage so I will leave any further detail until the next issue of *Excalibur*. I would also be pleased to hear from any members involved in other related activities or organisations in order to build up some stronger links with them.

Some of you may have heard that British Waterways is putting in a Single Regeneration Bid for the London's Canal and River Corridor. Although IWA is named as a partner we do not yet have detailed information. The Region will be working up a response to the proposals once we have these. Our planning and navigation sub committee, chaired by Ron Bingham, will be taking the lead in this.

I am delighted that we are able to announce that one of our Region Vice-Presidents, Arthur Farrand Radley, has been awarded the Cyril Styring Trophy by the Association. This award is given to recognise an outstanding contribution to the campaigning side of the IWA's work.

It was Farrand who, when he was London Branch Chairman in 1994, cajoled me into becoming Director of Canalway Cavalcade, a rôle which I have retained ever since. Farrand has, over the years, continued to be a firm supporter of the event and indeed of the many other activities of the branches and region. I have personally gained from his wide knowledge and wisdom. It is therefore a particular pleasure for me that this award has been given to Farrand at the start of my Chairmanship.

Recently, our other Region Vice-President, Michael Essex-Lopresti, has reluctantly had to give notice of his intention to stop leading the towpath walks which he has so ably done for many years. Not only do we need to replace Michael as organiser, but we need more people who are willing to volunteer as guides - no mileage is too small!

I'm sure I speak on behalf of us all in thanking both Farrand and Michael for being such hard working Vice-Presidents and for all that they put into the Association's work.

# On the Metreau

## News and Gossip of London's Waterways

### COMMITTEE CHANGES

#### London Region

At the Region AGM, Tim Lewis was elected to join the Region Committee and your Editor was also elected in his own right (in preparation for when we find someone to take over editing *Excalibur*). At the following Committee meeting Libby Bradshaw was elected as Region Chairman as Mike Stimpson had decided to stand down (although remaining on the Committee). We had also to prepare ourselves for a change of Region Secretary when Alison Struckett goes overseas. Mike Stevens was elected to that job (another reason why I need to hand over the Editorship. Please...)

Arthur Farrand Radley had given notice some months before that on the approach of his 80th birthday he would like to retire as Lecturers Panel Organiser, and Mike Stimpson was appointed to take over from him. More recently we have heard that Michael Essex-Lopresti needs to give up running our towpath walks programme once the present cycle of walks finishes in November. We are grateful to Mike for his three years of Chairmanship and to Farrand and Michael for the many years work they have done for us.

#### Middlesex Branch

Alison Struckett resigned as Branch Secretary as she has moved out of the area, and her place has been taken by Rosie Limming. Robin Bishop has been elected to the Committee and taken over the running of the social meetings. Most recently Bill Bannon has resigned from the Committee for personal reasons, leaving the Branch looking for a new Chairman.

#### North and East London Branch

Marcia Davies resigned as Secretary in the face of impending exams and has been replaced by Cathy Russell. Debbie Bevan has taken over from Richard Packer as Publicity Officer.

#### South London Branch

Libby's promotion to Region Chairman means that she needs to give up the Branch Chairmanship to avoid any conflict of interest. At the time of writing we are considering who to appoint; I hope the decision will be in time to appear in our Late News page. David Llewellyn has been elected as Deputy Chairman. David Young has

been elected to the Committee and has taken over the rôles of Membership Officer (from Dorothy Robbie) and Recruitment Officer (from Adrian Steinkamp). Jim Mason did not stand for re-election to the Committee and we thank him for his work in the past. Richard Bird, who has been Social Secretary for our Nottingham meetings, has recently been co-opted to the Committee. Mary Llewellyn has taken over from Mike Stevens the equivalent rôle for South Norwood meetings.

### QUOTABLE QUOTE

Martin Ludgate at the prize-giving after the Middlesex Branch Treasure Hunt: *'I would just like to say that of all the awards I have ever been given, this one is the most recent.'*

### REGENERATION BID FOR LONDON CANALS

British Waterways has bid for £12.75 million from the Single Regeneration Budget towards a £30 million strategic plan for regeneration of London's canal and river corridors over a period of 7 years. The documentation we have seen so far is fairly non-specific, so I can not tell you quite what the money is going to be spent on. The Government Office for London has asked BW to work up a more detailed bid. Since IWA is listed in the documentation as one of the partners in the project, we hope to get involved in consideration of the detail. In any case we shall keep an eye on what is going on.

### A CHAPTER OF ACCIDENTS

Graeme Heap has become a regular attender at Canalway Cavalcade with his Dutch Barge *Azolla*, and this year was no exception. After the event he planned to take a trip up the whole length of the Thames with his mother, who was visiting from Australia. Before setting off, he agreed to tow the pontoon bridge used at Cavalcade back to its mooring. In doing so he picked up something very large and very nasty on his propeller and was stuck there for the best part of a day getting rid of it.

Mobile again, he set off down the Regent's to Limehouse and decided that, as he was there at the time, he would join the Parliamentary Campaign Cruise. All went well until he was passing *HMS Belfast*, when huge clouds of white



smoke poured from his engine-room. He moored alongside the police pier in King's Reach and found that the problem was air starvation to the engine. That put right, the engine started again and he was able to complete his planned cruise. But it prompted him to do a lot of restoration work on his 40-year-old German engine. He tells me that it is quite a rarity: only 100 of that model were built, and only 30 put into boats. He is finding the manufacturers very keen to help him with workshop manuals and other information.

## GOODIES FROM MR GUMMER

The Department of the Environment has recently published a consultation document about planning matters concerning the Thames in London. IWA has not yet seen a copy, but it is rumoured that among other proposals it suggests planning protection for some of the working wharves on the river and an increase in passenger boat traffic. We look forward to it with interest.

## JUNE 200 CLUB WINNERS

1st	Mr R J Weldon	£47
2nd	Mr C W Pitman	£24
3rd	David Allison-Beer	£12
4th	David Llewellyn	£12

## HALF CUT AGAIN

Half Cut Morris, London IWA's in-house dance troupe plan their first public 'Dance Out' at the Middlesex Branch lock-manning on Sunday 4 August, followed by further appearances at the National Waterways Festival over August Bank Holiday weekend and the Limehouse Festival in October.

## YOUTH EVENT IN NORWOOD

On Saturday 8 June, IWA South London Branch ran some *Waterways for Youth* activities as part of a Youth Activity Day organised by Croydon Youth Service and Croydon Sports Forum. The *WfY* passport included a range of events which we staffed, along with sailing and canoeing organised by Croydon Youth Service and resuscitation organised with the Red Cross. About 60 youngsters completed the passport scheme to win a *WfY* baseball cap. The whole event was targeted at an older age-group than most *WfY* events, but we noticed that our activities attracted, among others, younger brothers and sisters of some participants in the sporting events. This was the second year the event had taken place and the first time that we had been involved. We were very pleased with

the response of the youngsters and look forward to making it an annual commitment. Many thanks to all those who helped.

## ANOTHER THREAT

There has been a planning application to build a 7-storey pub on the triangle of land alongside Kentish Town lock on the Regent's Canal. The plot of land is on the towpath side fronting the road. The development would require the demolition of the one remaining building on the site, which incorporates one of the original 19th century pump-houses for back-pumping up the length of the canal. A casual visual inspection of the building suggests that the rest of it is contemporary with the pump-house and may have been the engine-man's house.

## AUDREY TELLS THE P.M. WHAT FOR

IWA's national Chairman has written twice to the Prime Minister about a battle between two Government Departments which threatens the restoration of the Thames and Severn Canal. While the Department of the Environment is helping to fund a project officer to work on the restoration, the Department of Transport is proposing a low-level crossing of the canal by the new A419 Latton by-pass, which would prevent restoration at that point. Transport Minister John Watts has refused to provide a navigable culvert. Audrey Smith has told John Major that the Minister was 'grossly misinformed' about the economics of restoring the waterway. Studies undertaken for the Cotswold Canal Trust and local authorities have shown that income from a restored waterway would repay the investment in restoration many times over.

## THAMES SOUND SIGNALS

The PLA's Notice to Mariners no 23 of 1996 reminds masters of vessels on the Thames that the appropriate sound signals are mandatory when one is manoeuvring on the tideway. Since smaller vessels are not compelled to carry VHF radio, sound signals are the only reliable method of making one's intentions known. Those of us who venture infrequently onto such waters probably find it difficult to remember the signals. Personally I always keep a crib-sheet on the hatch-slide in front of me when steering on the tideway. Make sure you weight it down, or it will blow away! The new edition of London IWA's *Thames Tideway Guide* actually lists the sound signals in its centre-page spread along with its map, so that's ideal for the purpose.

## ALL SET FOR THE 'NATIONAL'

One of the main events in any year's IWA calendar is the National Waterways Festival over August Bank Holiday weekend. This Jubilee year it returns to the Black Country at Windmill End. A number of us from London IWA will be there. As for the last couple of years, Martin Ludgate and your Editor will be running the daily news-sheet.

One new venture this year will be some boaters' entertainments run by WRG. Waterways quizzes have prove popular at Branch level, especially with Martin as question-master. This year he is 'going national' to lead such a quiz on the Thursday evening before the Festival.

On the Saturday evening, WRG will present its pantomime, *Digerella*. This, they tell us, is the

story of a poor honest (lock) chamber-maid who wants to go to the Prince's Ball. Never before has this age-old fairy tale been quite so wet, never before have the ugly sisters been quite so ugly and never before have the Prince's Balls been so big. It stars Basingstoke, the pantomime horse who has often appeared at Canalway Cavalcade.

Finally on the Sunday afternoon in the main arena WRG challenges all comers to some Boaters' Games: 'It's a lock-out'.

Teams are invited to enter for the Quiz and/or the Games. Details are available from Judith Moore on 01926 646 608 (office hours).

In an entirely different style, the BBC Radio 2 Roadshow will be at the Festival all weekend with Ed Stewart, Mo Dutta and Alex Lester, with a live broadcast on Bank Holiday Monday.



*Narrowboat Spade on the Campaign Cruise past Parliament.*  
PHOTO: I do not remember who sent this one, but thank you anyway.

# 'Don't let us down now' – our words to Parliament

Text of the statement given to the Parliamentary Waterways Group during IWA South London Branch's Campaign Cruise on 9 May 1996

## To MPs and Peers

The Inland Waterways Association this year celebrates its Golden Jubilee. For fifty years we have campaigned for the retention, restoration and development of the waterways of the British Isles. We continue to fight to preserve this invaluable part of our national heritage for commercial carrying, where this is viable, and as a multi-use leisure amenity. Leisure use includes towpath walking and angling as well as all sorts of boating from narrowboats and cruisers to dinghies and canoes. In addition we campaign to preserve the wildlife and industrial heritage of the waterway system.

In our first fifty years much has been achieved. When we were founded in 1946 the canal system had been harmed by a century of neglect under railway ownership. At that time competition with road and rail transport made it likely that the canals could be closed down totally.

That this has not happened is, we claim, in large part due to the work of the IWA and to our vigorous Parliamentary campaigning. The 1947 Transport Act and its successors, which among other things created British Waterways, played a major part in preserving the central core of our waterways system.

But the battle is not yet over, and we call once again on Parliament to do its part in securing our waterways system for future generations.

The backlog of canal maintenance accrued during the railway age has not fully been dealt with. At one time the level of grant-in-aid to British Waterways enabled them to make a start, but recent reductions in this grant imperil not only any further improvement, but also current levels of basic maintenance. **We call on Parliament to see that the level of financial support to British Waterways and other publicly-owned navigation authorities is sufficient for them to be able to maintain their navigations to the highest standards.**

There is concern among many of our members that the absorption of the National Rivers Authority into the new Environment Agency endangers navigational interests since these are a very small element in a large body whose core responsibilities are quite different. **We therefore call on the Minister of State at the Department of the Environment to**

**complete the review of navigational responsibilities of British Waterways and the Environment Agency as a matter of urgency and thereby commit this and future Governments to the creation of a new unified framework for managing all publicly-owned navigable inland waterways, and to do so in a way that will be effective in promoting the use of such waterways for freight and leisure.**

We believe that the present arrangements for funding the infrastructure of various forms of transport discriminate unfairly against water-borne freight *vis-a-vis* rail and, more particularly, road transport. This we believe to be especially damaging since carriage by water is by far the most environmentally-friendly form of transport. **We therefore call upon Parliament to redress this imbalance so that water-borne trade can take its rightful place in the pattern of freight transport.**

Many of our campaign successes have come about through persuading legislators of the virtues of our cause. The ground that has been won could be endangered if Parliament fails to follow through its earlier positive decisions.

**BETWEEN US WE HAVE COME A LONG WAY. THERE IS A LOT FURTHER TO GO. IT NEEDS US ALL TO WORK TOGETHER. DON'T LET US DOWN NOW.**

## SUBSEQUENT EVENTS

Since the above document was handed to representatives of the Parliamentary Waterways Group, there has been an announcement of the results of the review of navigational responsibilities of BW and the EA. IWA has expressed its disappointment that *'the Department has failed to grasp the nettle regarding the underlying difficulties that currently face us on the inland waterways'*. A statement by our national Chairman, Audrey Smith, adds *'It is most regrettable that the Review appears to have ignored issues of funding, security of navigation and outdated legislation in favour of (nice words) that will offend no-one. It is our opinion that the Review of Navigation offered a major opportunity to redesign the structure of navigation in this country for the benefit of every user of the waterways and the tax-payer alike. It is a pity that the Minister has not felt up to the challenge on this occasion.'*

## Region Draw makes a flying start

As reported in the last issue of *Excalibur*, the London Region Draw has widened its scope this year and is participating in the IWA's Golden Jubilee celebrations. Draw tickets were sent out in the last issue of our national magazine *Waterways*. The response has been excellent—at the time of writing we have sold over £3,700-worth of tickets.

Hoping to sell as many tickets as possible, we have assembled fifty prizes for our fifty lucky winners. The major prizes include a one-week holiday on a six-berth Bridgewater Boat, thanks to the generosity of Lindy Foster, and Harley Crossley's magnificent oil-painting of the Anderton Lift, which was reproduced on the front cover of the last issue of *Excalibur*. There are also three short-break hire-boat holidays on waterways whose restoration has been due in large part to the work of the IWA over the last 50 years, and a £100 chandlery voucher. These major prizes have all been donated and the donors are advertised opposite. Please try to support these individuals and companies—their help is of great value to us.

In addition to the eight major prizes we also have forty-two smaller prizes which consist of

waterway magazine subscriptions from *Waterways World* and *Canal Boat*, waterway books and guides and a selection of other interesting prizes too numerous to mention.

Although many *Excalibur* readers have already returned completed draw tickets, we have included with this issue another book of five Draw tickets. If you have not already entered the Draw please help us by purchasing a book of tickets. If you have already entered please forgive us—but your Region's contribution to the IWA Golden Jubilee Appeal is important—as is WRG's requirement for the new plant and equipment to carry on their restoration work.

Draw tickets will also be on sale at the IWA National Waterways Festival at Windmill End on 24-26 August and over the weekend of the Limehouse Festival on 5/6 October. The Draw itself will be held at the Limehouse Festival on 6 October. Whether or not you have already entered the Draw yourself, why not try selling some tickets to your family and friends? If required, more draw ticket books are available by calling Richard Bird, in the evening on 0181 857 6367.

*Richard Bird*



*Our Draw organiser Richard Bird is seen here celebrating his 50th Birthday along with that of the IWA at our Region Dinner on 11 May.*

*PHOTO: Mike Stevens*

## YORKSHIRE AFLOAT

DISCOVER A  
DIFFERENT YORKSHIRE  
WITH

### SHIRE CRUISERS

The Wharf, Sowerby Bridge  
West Yorkshire, HX6 2AG  
Tel: 01422 832712

## Galleon Marine

2-8 berth luxury narrow boats all  
with central heating and baths.

Short or long breaks available  
throughout the season for you to  
enjoy the outstandingly beautiful

### Basingstoke Canal

Colt Hill, Odiham, Hants RG29 1AL  
Telephone: 01256 703691

## KENNET & AVON CRUISES

N. W. & J. BRIGGS  
*Rosina Emma*

4 berth luxury narrowboat for day or period hire  
on the Kennet & Avon Canal or River Thames.  
Families and small groups will find the spacious  
interior and full inventory provide every comfort  
for holidays or special occasions.

Based at Burghfield near Reading.

14 Beech Lane, Earley, Reading RG6 2PT  
Tel: (01734) 871115 or mobile (0831) 326482



**COME CRUISING**

Superb fleet  
of 23 boats  
from 2-berth  
to 10-berth

Send now for  
brochure and  
booking form.

**ROSE NARROWBOATS**  
Stretton under Fosse, Nr Rugby,  
Warwickshire CV23 0PU Tel. 01788 832449



## Chug through the Chilterns on a colourful Canal Boat

### BRIDGEWATER BOATS

Castle Wharf, Berkhamsted  
Hertfordshire HP4 2EB  
Tel: 01442 863615 Fax: 01442 863619



## HARLEY CROSSLEY Waterway Artist

Original Oil Paintings  
Commissions Accepted

Why not have a  
painting of your Boat?  
Prices from only £165.00

THE OLD SCHOOL  
NETHER COMPTON, SHERBORNE,  
DORSET DT9 4QA  
Telephone & Fax: 01935 815413

## High Line Yachting Ltd

Superb berthing facilities, chandlery  
with full Boatmans Cabin brassware  
display, servicing, brokerage - indeed  
everything for the boater!

MANSSION LANE, IVER, BUCKS SL0 9RG  
Tel: (01753) 651496 Fax: (01753) 630095

# **Welcome home - to the moorings you've always wanted**

## **Available**

Whatever boat you own - be it traditional Narrowboat, GRP Cruiser or classic Wooden Craft - you want to know she's moored on a site about which you can feel proud.

At last you have a choice!

Phase One at Willowtree Marina is now complete and we'll be delighted to welcome you.

## **Friendly**

Moorings in West London's newest and brightest purpose-built Marina

The promise of warm and personal service to you, your family and friends

## **Receptive**

An individual berth for your craft and all the facilities demanded by today's discerning Boatowner

## **Accessible**

Ideally positioned right in the middle of the Paddington Arm of the Grand Union Canal

## **Convenient**

Large car park with excellent road connections for A40, M4 and M25

## **Handy**

Well stocked Chandlery, a slipway and a large modern Engineering Workshop opening soon

## **Relaxing**

Bistro Restaurant and Wine Bar with a range of quality food and drink at affordable prices coming shortly

## **Peaceful**

Rural setting surrounded by green parkland and including a planned Equestrian Centre

For your free brochure containing further details and a mooring application, write to:

**Arthur Bennett  
Marina Manager  
(Mooring Enquiry IWA1)  
Willowtree Marina  
West Quay Drive  
Yeading Middx UB4 9TB  
Tel: 0181 841 6585**



# Waterways Events in and around London

See page 19 for details of Venues and Contacts for further information

## AUGUST

Until 23 August

LONDON CANAL MUSEUM: IWA loan exhibition.

**Bank Holiday weekend, 24th-26th**

**IWA NATIONAL WATERWAYS FESTIVAL AT WINDMILL END.** Details available from IWA Head Office, 0171 586 2510/2556

Saturday 24

RICKMANSWORTH WATERWAYS TRUST: I-Spy Trail based on the Canal Centre at Batchworth Lock. Free, but donations welcomed.

Wednesday 28, 6.30pm

**LONDON IWA WITH LONDON WALKS.** GUIDED TOWPATH WALK ON THE REGENT'S CANAL: ISLINGTON TO MILE END. Meet at Angel tube station.

## SEPTEMBER

Sunday 1st, 2.30pm

**LONDON IWA WITH LONDON WALKS.** GUIDED TOWPATH WALK ON THE REGENT'S CANAL: ISLINGTON TO MILE END. Meet at Angel tube station.

Tuesday 3rd, 8pm

**IWA N and E LONDON BRANCH (ISLINGTON) SOCIAL** Speaker to be arranged.

Weekend 7th and 8th

LONDON WRG: Dig on the Thames and Severn

Tuesday 10th, 7.30 for 8pm

**IWA MIDDLESEX BRANCH SOCIAL** Speaker to be arranged.

Wednesday 11th, 8pm

**IWA SOUTH LONDON BRANCH (S.NORWOOD)** Ian Bevan: *Caxton and the Crystal Palace*.

Thursday 12th,  
6.45 for 7.30pm

LONDON CANAL MUSEUM Lecture: Alan Faulkner: *The Grand Junction Canal*.

Sunday 15th, 2.30pm

**LONDON IWA WITH LONDON WALKS.** GUIDED TOWPATH WALK: BOW BACK RIVERS AND THE THREE MILLS. Meet at Bromley-by-Bow tube station.

Tuesday 17th, 8pm

**IWA N and E LONDON BRANCH (EDMONTON) SOCIAL** Speaker from the Tidal Mill Trust.

Thursday 19th, 7 for 7.30pm

**IWA LONDON REGION (CENTRAL LONDON)** Speaker from the Towpath Action Group (subject to confirmation)

Tuesday 24th, 7.30 for 8pm

**IWA KENT and EAST SUSSEX BRANCH:** *HOPS—A history of pub signs, canalside and elsewhere*.

Friday 27th, 8pm

**IWA SOUTH LONDON BRANCH (MOTTINGHAM)** Miranda Jagers: *The River Thames Boat Project*

Weekend 28th and 29th

LONDON WRG: Dig on the Wey and Arun.

**Saturday 28th**

**IWA NATIONAL A.G.M. in Rickmansworth.** See *Waterways* for details.

## OCTOBER

- Tuesday 1st, 8pm **IWA N and E LONDON BRANCH (ISLINGTON) SOCIAL** Speaker to be arranged.
- WEEKEND 5th and 6th** **IWA, BW, LC and CA: LIMEHOUSE FESTIVAL** in and around Limehouse Basin. See article on page 8 for more information.
- Saturday 5th **LONDON IWA: IWalk** See Late News page for more information (we hope).
- Saturday 5th **IWA N and E LONDON BRANCH: Canal Art course at the London Canal Museum.** Tutor: Tim Whitelock. Details from Tim Lewis see below)
- Sunday 6th, 2.30pm **LONDON IWA WITH LONDON WALKS. GUIDED TOWPATH WALK ON THE REGENT'S CANAL: MILE END TO LIMEHOUSE.** Meet at Mile End tube station.
- Tuesday 8th, 7.30 for 8pm **IWA MIDDLESEX BRANCH SOCIAL** Speaker to be arranged.
- Wednesday 9th, 8pm **IWA SOUTH LONDON BRANCH (S.NORWOOD)** Martin Ludgate: *WRG and the 'Dig Deep' project.*
- Thursday 10th, 6.45 for 7.30pm **LONDON CANAL MUSEUM Lecture:** Chris Elmers: *Ship-building on the River Thames.*
- Tuesday 15th, 8pm **IWA N and E LONDON BRANCH (EDMONTON) SOCIAL** Brian Daubeney: *Up the Limehouse Cut*
- Thursday 17th, 7 for 7.30pm **IWA LONDON REGION (CENTRAL LONDON)** Graham Horne: *Canals of Scotland.*
- Weekend 19th and 20th **LONDON WRG: Dig—venue to be arranged.**
- Sunday 20th, 2.30pm **LONDON IWA WITH LONDON WALKS. GUIDED TOWPATH WALK ON THE REGENT'S CANAL: PADDINGTON TO CAMDEN.** Meet at Warwick Avenue tube station.
- Thursday 24th, 7.30 for 8pm **IWA KENT and EAST SUSSEX BRANCH: Members' slides evening.**
- Friday 25th, 8pm **IWA SOUTH LONDON BRANCH (MOTTINGHAM)** Roger Squires: *Early campaigns of the IWA*

## NOVEMBER

- Weekend 2nd and 3rd **WRG CAMPS RE-UNION BIG DIG (provisional)**
- Saturday 2nd **IWA MIDDLESEX BRANCH WITH HILLINGDON CANAL CLUB: Jubilee fireworks party.**
- Sunday 3rd, 2.30pm **LONDON IWA WITH LONDON WALKS. GUIDED TOWPATH WALK ON THE REGENT'S CANAL: CAMDEN TO ISLINGTON.** Meet at Camden Town tube station.
- Tuesday 5th, 8pm **IWA N and E LONDON BRANCH (ISLINGTON) SOCIAL** Speaker to be arranged.
- Tuesday 12th, 7.30 for 8pm **IWA MIDDLESEX BRANCH SOCIAL** Speaker to be arranged.
- Wednesday 13th, 8pm **IWA SOUTH LONDON BRANCH (S.NORWOOD)** Peter Fernee: *Riverside walk from Arundel to Amberley.*

Thursday 12th, 6.45 for 7.30pm	LONDON CANAL MUSEUM Lecture: Robin Weir: <i>Ice cream making using antique ice cream machines</i> (includes demonstrations).
Sunday 17th, 2.30pm	<b>LONDON IWA WITH LONDON WALKS. GUIDED TOWPATH WALK ON THE REGENT'S CANAL: ISLINGTON TO MILE END.</b> Meet at Angel tube station.
Tuesday 19th, 8pm	<b>IWA N and E LONDON BRANCH (EDMONTON) SOCIAL</b> Speaker to be arranged.
Thursday 21st, 7 for 7.30pm	<b>IWA LONDON REGION (CENTRAL LONDON)</b> Speaker to be arranged.
5 November to 3 January	LONDON CANAL MUSEUM: Exhibition: <i>Canal art and painted canal ware</i> .
Wednesday 27th, 7.30 for 8pm	IWA KENT and EAST SUSSEX BRANCH: <i>The life of a River Medway pilot</i> .
Friday 29th, 8pm	<b>IWA SOUTH LONDON BRANCH (MOTTINGHAM)</b> Mike Stevens: <i>A look back at Jubilee Year</i>

## VENUE DETAILS and CONTACT PEOPLE

MEETING	VENUE	CONTACT
IWA CENTRAL LONDON	<i>The Barley Mow</i> Horseferry Road, SW1 (Nearest tube Victoria or St James' Park)	Tim Lewis 0181 367 6227
IWA MIDDLESEX BRANCH	Hillingdon Canal Club Uxbridge Wharf — 0181 452 2623 Rear of 32 Waterloo Road, Uxbridge	Robin Bishop
IWA N and E LONDON BRANCH (ISLINGTON)	<i>The George</i> , Liverpool Road, N1 (across Tolpuddle Street from Sainsbury's; 250 yards from Angel Tube)	Alan Russell 0181 529 0689
(EDMONTON)	Millfield Arts Centre Silver Street, Edmonton N18 (Close to Great Cambridge Road junction. ½ mile west of Silver Street BR station).	Alan Russell 0181 529 0689
IWA SOUTH LONDON BRANCH (NORWOOD)	<i>The Albion</i> , corner of High St and South Norwood Hill, SE25 (Close to Norwood Junction BR)	Mary Llewellyn 0181 653 4862
(MOTTINGHAM)	<i>The Royal Tavern</i> , Mottingham (corner of Court Road and Sidcup Road, close to Mottingham BR).	Richard Bird 0181 857 6367
LONDON IWA/LONDON WALKS TOWPATH WALKS	As listed. Each about 2 hours £4.50 (concessions £3.50)	London Walks 0171 624 3978
LONDON WATERWAY RECOVERY GROUP	Various venues. Meeting point usually Waterloo Station 7pm Friday to travel to site.	Tim Lewis 0181 367 6227
IWA KENT and EAST SUSSEX BRANCH	<i>The Fountain Inn</i> , Tonbridge Road Barming, Maidstone	Angela Madle 01634 722 661
LONDON CANAL MUSEUM	12/13 New Wharf Road, London N1 9RT (5 minutes walk from King's Cross station) Normal opening: Tues – Sat 10am to 4.30pm Admission £2.50, concessions £1.25 Group rates and school parties by arrangement. Lectures £2 (£1 concessions) bookable in advance or on the door Door and shop open at 6.30pm	0171 713 0836

# Late News

## IWAIK : FUN FOR FUNDS.

Now we know what we're doing, and it sounds fun. The idea is for simultaneous sponsored walks all over the country in aid of waterways causes. London Region's contribution to the event will be a bit different from most: instead of a sponsored walk, we shall organise a sponsored bow-haul of boats on the Regent's Canal from City Road Lock to Limehouse Basin, where the Limehouse Festival will be in full swing. The date is Saturday 5 October and the detailed timing is yet to be decided.

We are hoping the event will appeal to Community Boats and other groups (come on, WRG!) as well as private individuals. If you own a boat (or know somebody who does) why not get together a team and find some sponsorship? Office teams, pub teams, IWA Branch teams are all welcome: anyone who wants to join in. What about a BW team?

Our aim is to keep it pretty free-form: it's not a race, just an opportunity for a fun way of raising funds and getting some publicity. So we're not specifying the size of each team or the weight of the boat: simply that the boat must be pulled by person-power and the team must work all the locks for themselves. There will be the minimum of rules: simply those needed for safety.

Details and sponsorship forms will be available from your Editor when I get back from holiday (on 1 September). If you want to register a preliminary interest before then, drop me a line, or you can leave a message on my answering machine at home (address & phone number on page 1).

## CONGRATULATIONS

Alison Struckett and Rupert Smedley are getting married during August. This will make them a two-historic-narrowboat family. Will it help resolve the confusion being caused by Alison's boat being called *Shirley* and Rupert's being called *Ben*? We're sure that Ben and Shirley will be very happy together. Dedicated as ever to waterways events, Rupert and Alison are fitting in their wedding and honeymoon in between the BCN Marathon Cruise and the National Waterways Festival.

## BW FUNDING CRISIS

British Waterways' Annual Report tells us that they have told the Government that their proposed level of funding for 1996/7 is insufficient and that the safety and integrity of the waterway network will be endangered. IWA has supported BW over this, and our national Chairman, Audrey Smith, has said "This Government policy of short-term political expediency will leave future generations to bear the cost of major repairs which should be funded by proper

maintenance records now. The Government must make more funds available to eliminate the backlog of repairs immediately. Anything less will hit tourism hard as waterways close and famous landmarks are sealed off for safety reasons." Audrey's Press Statement referred to South London Branch's recent campaign cruise that brought exactly this point to the attention of Parliament (see elsewhere in this issue). She also mentioned the increasing cost of restoring the Anderton Lift because of the long delays.

## NATIONAL A.G.M.

This is to be held in Rickmansworth on Saturday 28 September. As always, the Branch Chairman's meeting will take place in the morning and the AGM in the afternoon. Full details will be in *Waterways*, which is due for publication shortly. Lunch (£5.50) and Dinner (£16) are available but need to be booked in advance. Lunch bookings are being handled by Neil Edwards at IWA Head Office and dinner bookings by Mike Stimpson (phone number on page 2). As the venue's on the edge of our Region this year, it would be good if we had a big turn-out of London members.

## JUBILEE FUNDS

The latest news of the IWA Golden Jubilee Appeal is that it has received £25,000 in income (against which has to be set some £2,000 expenses). JCB kindly agreed to give a discount of £10,000 on the digger that was one part of the appeal's target. This has now been bought and presented to WRG. Meanwhile the fund-raising goes on for the rest of the target: replacing WRG's ageing fleet of vans.

The London Region Jubilee Draw has continued to do well since the article elsewhere in this issue was written. The total income to date is £4,128. Hopefully this issue of *Excalibur* will sell some more tickets. They will also be on sale at the "National", where Richard Bird will be running a stand in the main IWA marquee. If any London members visiting the event can spare a couple of hours to give Richard a hand there, you will be most welcome.

The original intention was to give 50% of the profits of the Draw to the Jubilee Appeal, the rest being kept by London Region. The Region Committee has recently decided that in addition to the 50% for the Appeal, it will donate a further 25% to other restoration projects.

**S. LONDON BRANCH** didn't manage to appoint a new Chairman at its latest Committee meeting. Instead the Deputy Chairman, David Llewellyn, has agreed to "act up" in the rôle for the time being.



## South London Branch

PLANNED ANYTHING FOR THE BANK HOLIDAY WEEKEND?

WHY NOT JOIN IN THE FESTIVITIES AT

**IWA GOLDEN JUBILEE**

**NATIONAL WATERWAYS FESTIVAL AT WINDMILL END**

TRIPS ON THE SUNDAY AND MONDAY LEAVING FROM SOUTH LONDON WITH PICK UP

POINTS ON ROUTE.

INTERESTED? CONTACT ADRIAN ON **0802 863744** TO BOOK YOUR PLACE

**NOW!**

A DONATION OF £15 WOULD BE APPRECIATED TO COVER COSTS